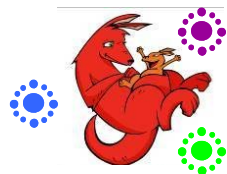


23 Indiana Pl
Kuluin, QLD 4558
07 54451192

kuluinelc@gcaweb.com.au



Kuluin Early Learning Centre

'Committed to caring for your child'

From the Office

It has been a busy start to the year with lots of new enrolments and room changes occurring all at once! We have made it through and it is wonderful to see how well all children have settled into their new environment. We take pride here at Kuluin ELC at our 'open communication' with parents, we will always let you know if there is anything we need to discuss with you about your child so that we can work with you to help your child to reach their full potential and gain as much out of the program as possible. We believe we are here not only to 'look after' the children, but to educate them and that our whole program reflects this.

Ezi Debit

A number of parents have had queries about our Ezi Debit system. Here are a few points to try to explain it a bit more.

- The system is set up so that parents do not have to worry about whether or not they are up to date with their account, i.e., 2 weeks in advance at **all** times.
- There is no set amount that comes out each week/fortnight. When you read and signed the ezi debit form, you signed for us to withdraw whatever is owing on the day you have nominated for the withdrawal to take place. Therefore, there is no spot for a 'set' amount of money to be written on the forms.
- The amount that is debited will usually be the same each week/fortnight (your gap fee). This will only change if your CCB % changes, you have an extra day, you have a holiday credit or if our fees rise.
- If your gap fee does increase then your next ezi debit will reflect this; not only for the current week, but the next two weeks in advance will also be added on to this debit so your account will not fall behind.
- If you pay via a credit card, there will be a small fee that ezi debit charges.
- If there isn't enough money in your account on the day, your bank will charge you with a fee, we do not. The fees that do not get withdrawn from your account will be put back onto your child care statement and unless you make up this payment with eftpos then the amount owing will be added on to your next withdrawal next time
- If your debit day is a Public Holiday, then your fees will be withdrawn from your account the next business day.
- We need 2 days notice (via a new form) to make **any** changes to your ezi debit, e.g. Account details or a day change.

Staff Profile

Hi, I'm Terissa Packer, I am the Group Leader in the Junior Kindy room. I have recently become qualified in the Diploma of Children's Services. I have worked at Kuluin Early Learning Centre for approximately 19 months now, since I moved up from Ipswich for a sea change. I have worked in the Childcare Industry for 5 years and have experience in all age groups. I have 2 children of my own, Dylan 13 and Teagan 10. I look forward to getting to know all of you.



Breakfast at Kuluin Early Learning Centre

If your child has had an early drop off (before 7am only) and requires breakfast please prepare this prior to leaving them and seat them at a table to eat. As often staff / child ratios at this time of the morning does not allow for a staff member to leave the area to prepare meals in the kitchen.

New Equipment

Have you noticed our new toys? Thanks to the fundraising efforts of families last year, we were able to purchase a few new items that we needed for the children. We have a new:

Large blue Water Trough

5 small child sized hoops

4 huge Tonka Trucks

2 toy Lawnmowers

A big tea set

A Toddler Slide/Fort

Our first fundraiser for the year will be the 'Simply Pies', Pie Drive due to start in May.

Lunch Box Ideas:

Sandwiches are the easiest and most popular type of lunchbox meal. Try varying the fillings and use all different types of breads, including pita bread, bread rolls, bagels, mountain bread, baguettes, French sticks, muffins, crumpets, and mixed grain, wholemeal and high-fibre white.

To keep it interesting and appealing for the little ones use cookie cutters to cut sandwiches into shapes or try kids sushi: put sandwich filling on a slice of bread then roll up and cut into thirds.

- * Cheese and vegemite
- * Chopped skinless chicken, cottage cheese and tabouli
- * Light cream cheese, grated carrot, sultanas and celery
- * Tuna, mayonnaise and lettuce
- * Peanut Butter and celery
- * Low-fat cheddar cheese, sliced apple and celery
- * Cottage cheese, celery, tuna and sprouts
- * Avocado, celery, tomato and lettuce
- * Avocado, grated carrot and bean sprouts
- * Lean ham and fruit chutney
- * Mashed bananas and cottage cheese
- * Cheese, sliced tomato, lettuce and grated carrot
- * Cheese and shredded lettuce
- * Grated cheese, grated carrot and shredded lettuce.
- * Sliced hard boiled egg and lettuce
- * Chicken, lettuce and mayonnaise
- * Turkey, lettuce and relish
- * Smoked Turkey and cranberry sauce
- * Cold meat, tomato, lettuce and grated carrot
- * Ham, mustard and tomato
- * Shaved ham and cheese
- * Homos, dried tomato and sprouts

If your child doesn't like bread or if they would prefer a change from sandwiches try: crispbreads - wholegrain, wholemeal or white, cruskits, salada's, ryvita's, wholemeal crackers, plain crackers, water crackers, corn thins, rice crackers or rice cakes.

For further lunch box ideas, go to:

Smart-Mums.com.au

Forever in my Heart

Although I'm not their Mother, I care for them each day.

I cuddle, sing and read to them and watch them as they play.

I see each new accomplishment, I help them grow and learn, I understand their language, I listen with concern.

They come to me for comfort, I kiss away their tears.

They proudly show their work to me, I give the loudest cheers!

No, I'm not their Mother, but my role is just as strong.

I nurture them and keep them safe, though maybe not for long.

I know someday the time may come when they will have to part, but I know each child I cared for is forever in my heart!

Unknown Author.



Little Champs Dancing

Miss Maria is back for another year of fun, active, dance, exercise and music! She will be here each Thursday at 10.30 and all children from Junior Kindy to Pre-School will be able to enrol. The cost of each class is \$7.50 (at this stage) and this is payable via cash in the fee box each week.



MONTHLY POLICY FOCUS

HLTH 1.9 Infection Control Policy

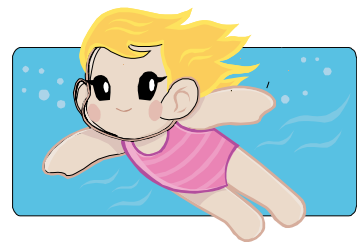
Please see the display in Foyer or in the Centre Policies Handbook. Feel free to give us your suggestions and feedback.

Thank you for last month's feedback, the feedback slips have been summarised and are currently being reviewed at head office. Updated policies will be displayed in the foyer once received from Guardian.

Up-Coming Events:

Thursday 5th March- Water Play day. Please bring your child in some sun smart swimmers and a towel (named please).

Tuesday 17th- St. Patrick's Day. Wear Green.



Nursery

Over the past month we have focussed on settling new children and families into our childcare setting, and we are now ready to start introducing some fun play opportunities for the month of March. Throughout the month of March the Nursery children will explore a variety of sensory experiences such as:

Water play, footprint painting, texture rugs and sand play.

A few reminders to all families:

*Please check your child's finger nails and keep them trimmed by using nail clippers.

*Check your child's nappy supply each week.

*Clearly label all belongings.

*Please provide your child with at least 1 extra meal/bottle etc, in case your child is being picked up a bit later or your child simply has a bigger appetite one day.

*Please continue to take a moment when you arrive to drop your little one off, to write any messages about where your child is up to in their routine, sleep pattern, feeding and general well being.

See you in the Nursery

Janet, Katie, Alana



Toy Suggestions for young babies:

- Board books
- Foot or hand puppets
- Musical toys / Rattles
- Small, lightweight, easy-to-grasp toys / Squeaky toys
- Toys with high-contrast graphics, bright colours, or black-and-white patterns

Toy Suggestions for older babies:

- Activity boxes:
 - levers/buttons/dials/hinges
 - Balls
- Beginning puzzles (two or three large pieces; knobs are helpful)
- Blocks / Cars and trucks
- Chunky small people and accessories
- Dolls and stuffed animals
- Hammering toys
- Large interlocking beads
- Modelling dough
- Musical toys
- Nesting cups / Shape sorters
- Peg boards / Stacking rings
- Picture books / Plastic animals
- Pop-up, Push or Pull toys
- Toy versions of everyday items (telephones, cooking utensils)

Toddlers

The toddlers have been settling in very well, most of us are over the initial settling period and are having lots of fun. It has been great to get to know the new parents, please speak to either Theresa or Leanne if you have any questions, queries, comments or for a general run down on how your child is doing/ feeling that day. If we are not here in the morning when you drop off your child please leave any messages in the Parent Messages page.

This month in the toddler room we are focusing on healthy eating and good food choices, in order for us to be able to help teach the toddlers about healthy habits we ask that all parents pack their child a healthy nutritious lunch box, with finger foods for them to develop their self help skills. If you would like some ideas please speak to either Theresa or me and we will help out with some suggestions. If you would like to pack in a small treat for afternoon tea please do so, we know that there are many very busy working parents and time is sometimes we could do with more of, but please help us to teach the toddlers healthy eating habits and save pre packaged snacks as treats for at home. Please name all your child's drink bottles and containers.

If you have not yet paid your \$2 for your child's scrapbook, could you please do so soon as we have work ready to go into them.

Please remember to sign your child in and out each day, (check you are signing the right column) and check your child's pocket regularly.

Leanne and Theresa.



Junior Kindy

Can you believe we are in March already? We have been having so much fun the time has just seemed to have flown by. We have been focusing on getting settled in and getting to know each child individually, as well as getting into routine. The children all seem to have adjusted to all the changes quite well and have begun to show their own unique personalities and talents.

Some areas of focus we will be continuing with are language and listening skills, we are singing songs to encourage the children to be able to say their own names, this is also helping them to learn the names of their friends. With this we are also encouraging the children to allow other children to have a turn at talking and knowing when it is time for listening. Another skill we are working on is sitting on the group mat with our legs crossed and our hands in our lap, when we sit like this we are showing the carer that we are ready to listen and it also helps us keep our hands and feet to ourselves.

Thank you to the parents who have brought in the money for the scrapbooks, we have already begun adding to them. During the year we will be doing some specific art/craft activities that will show how we have progressed during the year as well as having a theme to them for a special touch. Hopefully they will become a cherished item from your child's Kindy experience.

As mentioned, we are adding themes to the program, our first theme will be based on one of our favourite books "The Very Hungry Caterpillar", as we read this story we are also learning to count, working on colour recognition and our language skills. Some of the artwork to fit into this theme will include leaf rubbings, collage and painting. We are looking forward to incorporating this into our daily activities and hope you will enjoy the finished product as much as



we know the children will enjoy creating it

Please feel free to come and talk to us at any time if you have any concerns, queries or would just like to talk about how your child is going. Thank you,

Terissa and Rachael



Senior Kindy News

I hope everyone has enjoyed their first weeks in Senior Kindy as much as we have. We have been focusing on health and hygiene this past month and talking a lot about healthy foods, and our 'sometimes' foods, that we need to save for special treats at home. On that note, I would like to please ask that parents save all chocolate, chips, and lollies for these times at home. We are encouraging the children to make healthy choices from their lunch boxes so they are able to make the right decisions and encourage independences.

If you need suggestions for lunch boxes ideas, please see the Lunch Boxes Ideas poster on the fridge or feel free to talk to Annette, Alana or myself at any time.

We have also been practicing washing our hands with our song 'Wash the germs away.' and trying to help keep our room clean by tidying up our toys and as it has been so hot, using the spray bottles to clean the tables and chairs outside. The children really enjoy this as it is a time where they can play with water and bubbles and cool down a bit in this lovely summer heat. This also helps develop life skills and a sense of responsibility and achievement once the job is finished.

We have just started our journey though Letterland.

Letterland is a magical land where each letter has a character and by learning about them and what they like the children will learn which letter they represent, the sound they make, how to recognize and read the letter and a few words that start with that letter.

We travel to Letterland in many different ways including; airplane, boat, car, magic carpet and train.

I have found this method of teaching quite effective and the children already seem excited and intrigued by some of the characters.

The first character we met was Annie apple. She lives in the apple orchard with Mr A. she likes all sorts of animals except ants as they tickle her when they crawl over her tummy.

To follow on with our healthy eating we will be looking at 'what's in the garden'. The children have said they would like to plant some flowers and vegetables and watch them grow. I think this will be a great project. If you have any seeds or clovers (small sizes) to donate we would really appreciate it. We will also be looking at the different bugs and animal we find in there.

Finally, I have sent home a note asking for everyone to please bring \$3.50 to go towards the book for the children's end of year profile. If you could please bring this in as soon as possible. We would like to get these started as your children have been doing a lot of great art work lately.

Thank you Kirby, Annette and Alana.

Wash the germ away

Wash the germs away,

Wash the germs away,

Rub and scrub
and rub and scrub.

And wash the
germs away.



Preschool

Our settling in period is well and truly over and our children are now confident and capable members of the pre-school group. They are enjoying the responsibility of choosing the activities they prefer which enables them to be in charge of their own learning and ensures they are interested in what they are doing.

Our show and tell roster will begin at the start of March. This will be a rotating roster where every two weeks your child will have their turn on the same day. Please check the calendar regularly to ensure you have the right day. If it is not your child's day, please leave items at home until it is their turn. As we have so many children to do show and tell each day, it can be difficult for children to sit for such long periods of time. Therefore, please limit your child to one item each time, only on their day. Show and tell is at 9.30am every morning so please have your child at Pre-school by this time to ensure they don't miss out on their turn.

The 24th of February was Pancake Tuesday. On this day, we worked together to measure the ingredients, mix them together and cook them in the fry pan. The end result was yummy, scrummy pancakes topped with honey and sprinkles. From this activity, children have shown a lot of interest in cooking. We used a web chart to work out what we already knew about the subject, read some stories ("Spot bakes a cake" and "Maisy makes gingerbread") and added some extra items to home corner to promote make believe play. Where possible we will do regular cooking experiences and if you have any favourite recipes we would love to hear them (please note: we do not have an oven at the centre so all cooking must be done in the microwave/electric fry pan, etc) Jodie brought in "The Gingerbread Man" story and dvd and everyone really enjoyed listening and watching it. We decided that he was a rather cheeky little cookie indeed and thought the story needed more investigating.

A big thank you to Chloe's Mum, Fiona for coming in to read us some stories and for bringing us some yummy afternoon tea.

We have had two new friends join us in Pre-school recently so a big welcome to Leah and Jade. We look forward to getting to know you and your families.

Jodie and Tiffany



13 HEALTH



**(13 43 25 84)
Concerned?
Make the call.**

One phone call can point you in the right direction

It's not an emergency, but it could be serious.

Queensland Health now has a phone line **13 HEALTH** (13 43 25 84) for all Queenslanders to help take the worry out of health concerns.

You can phone 24 hours a day 7 days a week for the cost of a local call.*

Qualified staff will give you advice on who to talk to and how quickly you should do it.

The advice is confidential, qualified and supportive. **13 HEALTH** can ease your concerns.

13 HEALTH provides qualified health advice; it is not a diagnostic service and should not replace medical consultation. In an emergency always dial 000.

*Calls from mobile phones may be charged at a higher rate than local call charges. Please check with your telephone service provider.

www.health.qld.gov.au/13health/default.asp

Kuluin Early Learning Centre

Policy to be reviewed – HLTH 1.9 Infection Control Policy

Tick or sign You are happy with current policy	Tick or sign I would like to see changes made to current policy	Comments or changes you would like to see made	Source of information

Your feedback is collated with the feedback staff have given. The Centre Manager then writes a summary indicating the changes we feel necessary. The summary along with the review slips are then sent into head office for their input. Changes are made accordingly and a new policy is formed. then display the updated policy in the centre foyer and inform you of the changes in the monthly newsletter.

HLTH1.9 Infection Control Policy		H E A L T H	
		P O L I C Y & P R O C E D U R E	
Reference:	State Specific Childcare Regulations & Act as per SCH1.1 State Based Regulations & Legislation Schedule	Issue Date:	January 2008
		Review Date:	January 2009
QIAS Principles:	5.5, 6.2, 6.3, 6.4, 6.6		
Source:	1. Staying Healthy in Childcare 4 th Edition – December 2005 2. Communicable Diseases Intelligence – Infection Control in Childcare Settings - Department of Health & Ageing Website www.health.gov.au 28 Dec 2007		

Objective
For staff to use universal precautions to minimise the spread of any infection within the centre and to role model positive health practices.

Explanation
Staff will use a set of standard precautions when handling any bodily fluid or discharge. This means that staff will perform all tasks as if they were dealing with infectious material in order to protect staff, children and visitors and minimise the risk of infection at the centre.

Implementation

Infections are spread in the following way:

- i. Airborne droplets (coughing and sneezing)
- ii. Throat and nose discharge
- iii. Faecal
- iv. Skin contact
- v. Urine
- vi. Blood and body secretions

Universal Precautions include the following:

- i. Regular, effective handwashing (staff, visitors and children)
- ii. Wearing gloves when handling bodily fluids (nappy changing, breast milk, administering first aid, cleaning blood/fluid spills)
- iii. Using a mask when giving CPR
- iv. Covering lesions on staff and children
- v. Regular cleaning of the premises and surfaces

1. Handwashing Instructions are to be placed near all hand washing basins (children and staff)
2. Staff, visitors and children are to be instructed in correct handwashing procedures (training for staff is to be documented)

3. Gloves will be provided at nappy change areas, in bathrooms, in kitchen for food handling.
4. Tissues are to be provided for wiping noses and with the First Aid Kit.
5. A child's resuscitation mask will be contained in the First Aid Kit and staff will be instructed in how to use this effectively.
6. Spills of bodily fluid will be cleaned up as per the Blood and Bodily Fluid Spills Policy

Prepared By: Z. Johnston

Version: 1.1

Page Number: 1 of 1